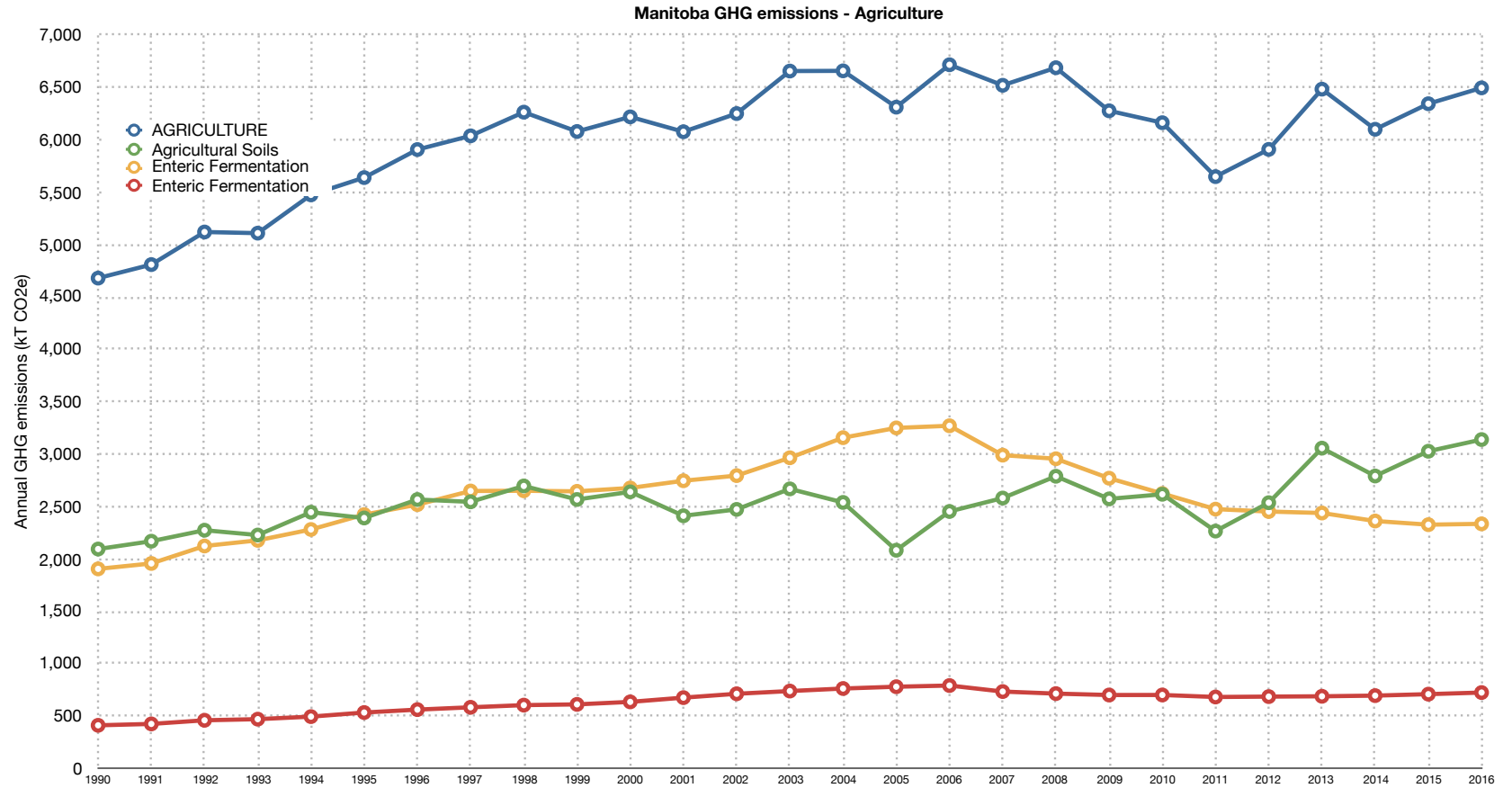


# Manitoba GHG emissions

# Agriculture

	1990	1991	1992	1993	1994	1995	1996	1997	1998	1999	2000	2001	2002	2003	2004	2005	2006	2007	2008	2009	2010	2011	2012	2013	2014	2015	2016
<b>Manitoba TOTAL</b>	18,296	17,903	18,190	18,212	18,666	19,447	20,240	19,904	20,426	20,173	20,688	19,311	19,846	20,359	20,638	20,122	20,303	20,792	20,562	19,342	19,098	18,858	20,179	20,901	20,794	20,620	20,980
<b>AGRICULTURE</b>	<b>4,679</b>	<b>4,808</b>	<b>5,119</b>	<b>5,108</b>	<b>5,474</b>	<b>5,639</b>	<b>5,906</b>	<b>6,037</b>	<b>6,263</b>	<b>6,079</b>	<b>6,218</b>	<b>6,076</b>	<b>6,250</b>	<b>6,656</b>	<b>6,658</b>	<b>6,311</b>	<b>6,716</b>	<b>6,520</b>	<b>6,687</b>	<b>6,276</b>	<b>6,163</b>	<b>5,648</b>	<b>5,908</b>	<b>6,483</b>	<b>6,100</b>	<b>6,344</b>	<b>6,495</b>
Enteric Fermentation	1,904	1,956	2,122	2,176	2,280	2,422	2,517	2,647	2,649	2,644	2,676	2,745	2,794	2,964	3,156	3,249	3,270	2,989	2,955	2,769	2,623	2,474	2,451	2,437	2,361	2,326	2,334
Manure Management	411	424	459	469	494	533	560	583	603	610	634	675	712	738	762	779	790	733	713	700	700	681	685	688	694	708	723
Agricultural Soils	2,093	2,168	2,273	2,227	2,445	2,390	2,566	2,544	2,695	2,566	2,639	2,411	2,472	2,667	2,538	2,082	2,452	2,580	2,788	2,572	2,616	2,264	2,536	3,056	2,790	3,027	3,138
Agriculture - % of 1990	100.0%	102.8%	109.4%	109.2%	117.0%	120.5%	126.2%	129.0%	133.8%	129.9%	132.9%	129.9%	133.6%	142.2%	142.3%	134.9%	143.5%	139.3%	142.9%	134.1%	131.7%	120.7%	126.3%	138.5%	130.4%	135.6%	138.8%
Enteric Ferm. - % of 1990	100.0%	102.7%	111.5%	114.3%	119.8%	127.2%	132.2%	139.1%	139.2%	138.9%	140.6%	144.2%	146.8%	155.7%	165.8%	170.7%	171.8%	157.0%	155.2%	145.5%	137.8%	130.0%	128.8%	128.0%	124.0%	122.2%	122.6%
Manure Mgmt % of 1990	100.0%	103.2%	111.7%	114.3%	120.2%	129.7%	136.5%	141.9%	146.9%	148.7%	154.5%	164.3%	173.3%	179.6%	185.5%	189.7%	192.5%	178.5%	173.7%	170.4%	170.5%	165.8%	166.7%	167.5%	169.0%	172.4%	176.2%
Soils - % of 1990	100.0%	103.6%	108.6%	106.4%	116.8%	114.2%	122.6%	121.5%	128.8%	122.6%	126.1%	115.2%	118.1%	127.4%	121.3%	99.4%	117.1%	123.2%	133.2%	122.9%	125.0%	108.2%	121.1%	146.0%	133.3%	144.6%	149.9%



Data source: Environment Canada, Canada's Greenhouse Gas Inventory, <http://www.ec.gc.ca/ges-ghg>  
 Chart by: Climate Change Connection, <http://climatechangeconnection.org>