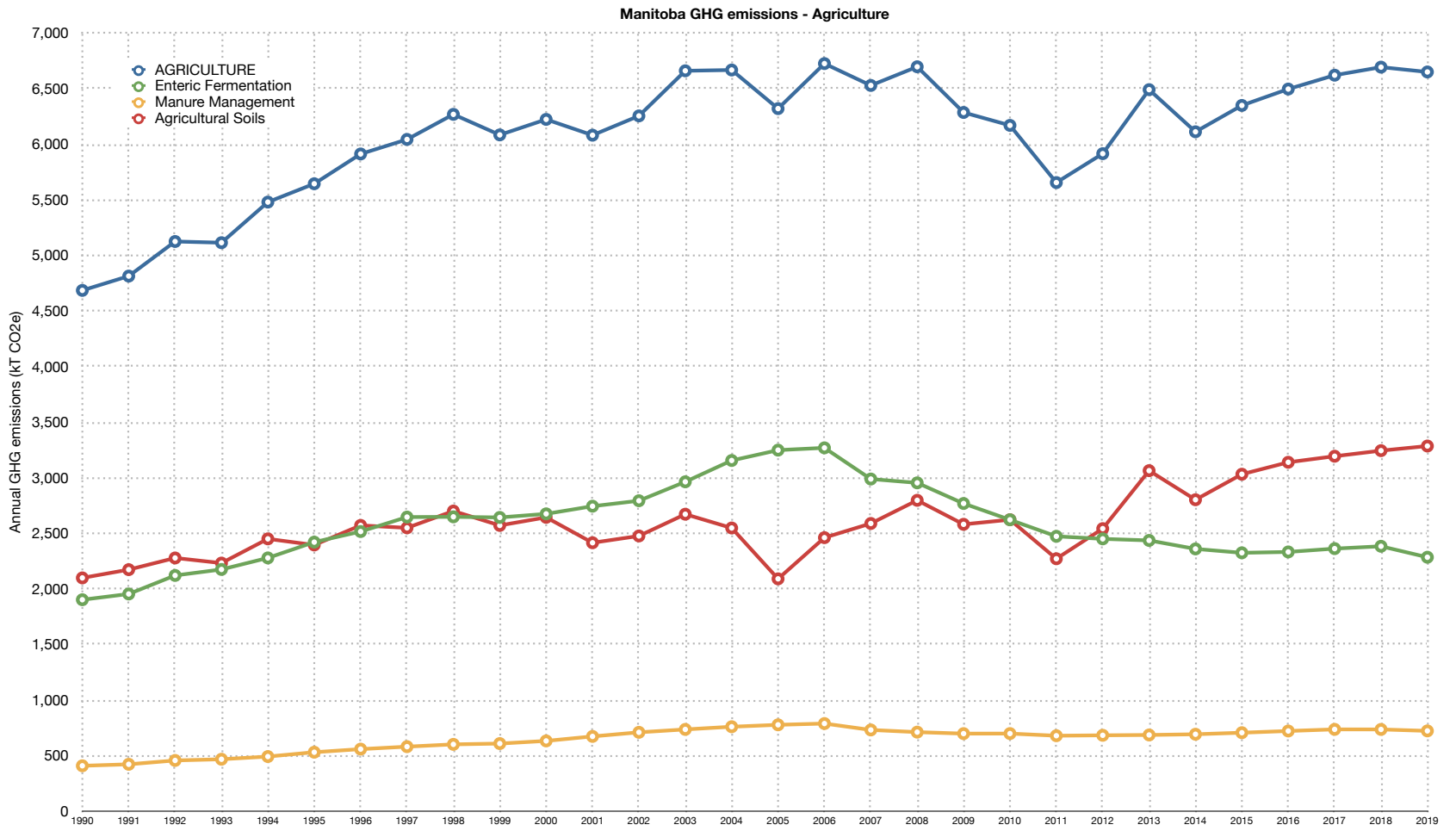


Manitoba GHG emissions

Agriculture

	1990	1991	1992	1993	1994	1995	1996	1997	1998	1999	2000	2001	2002	2003	2004	2005	2006	2007	2008	2009	2010	2011	2012	2013	2014	2015	2016	2017	2018	2019
Manitoba TOTAL	18,599	18,218	18,534	18,571	19,052	19,873	20,700	20,381	20,903	20,662	21,184	19,805	20,336	20,863	21,153	20,634	20,818	21,306	21,177	19,945	19,696	19,463	20,776	21,520	21,454	21,223	21,478	22,167	22,886	22,647
AGRICULTURE	4,688	4,815	5,128	5,115	5,480	5,645	5,913	6,044	6,269	6,084	6,224	6,082	6,355	6,661	6,668	6,321	6,728	6,529	6,697	6,286	6,170	5,656	5,916	6,491	6,112	6,349	6,497	6,621	6,694	6,650
Enteric Fermentation	1,904	1,956	2,122	2,176	2,280	2,422	2,517	2,647	2,649	2,644	2,676	2,745	2,794	2,964	3,156	3,249	3,270	2,989	2,955	2,769	2,623	2,474	2,451	2,437	2,361	2,326	2,334	2,363	2,385	2,286
Manure Management	410	424	458	469	493	532	560	582	603	610	634	674	711	737	762	779	790	733	713	700	700	681	685	688	694	708	723	738	737	724
Agricultural Soils	2,100	2,174	2,279	2,233	2,451	2,396	2,572	2,550	2,702	2,572	2,645	2,416	2,477	2,673	2,549	2,092	2,462	2,590	2,798	2,582	2,624	2,272	2,543	3,065	2,803	3,033	3,140	3,194	3,245	3,286
Agriculture - % of 1990	100.0%	102.7%	109.4%	109.2%	116.9%	120.5%	126.2%	129.0%	133.8%	129.8%	132.8%	129.8%	133.5%	142.1%	142.3%	134.9%	143.5%	139.3%	142.9%	134.2%	131.7%	120.7%	126.2%	138.5%	130.4%	135.5%	138.6%	141.3%	142.9%	141.9%
Enteric Ferm. - % of 1990	100.0%	102.7%	111.5%	114.3%	119.8%	127.2%	132.2%	139.1%	139.2%	138.9%	140.6%	144.2%	146.8%	155.7%	165.8%	170.7%	171.8%	157.0%	155.2%	145.5%	137.8%	130.0%	128.8%	128.0%	124.0%	122.2%	122.6%	124.1%	125.3%	120.1%
Manure Mgmt % of 1990	100.0%	103.2%	111.7%	114.3%	120.2%	129.7%	136.5%	141.9%	147.0%	148.7%	154.5%	164.4%	173.4%	179.7%	185.6%	189.8%	192.6%	178.6%	173.8%	170.5%	170.6%	165.9%	166.8%	167.6%	169.1%	172.5%	176.3%	179.8%	179.7%	176.5%
Soils - % of 1990	100.0%	103.5%	108.5%	106.4%	116.7%	114.1%	122.5%	121.4%	128.6%	122.5%	125.9%	115.1%	118.0%	127.3%	121.4%	99.6%	117.2%	123.3%	133.2%	122.9%	124.9%	108.2%	121.1%	145.9%	133.5%	144.4%	149.5%	152.1%	154.5%	156.5%



Data source: Environment Canada, Canada's Greenhouse Gas Inventory, <http://www.ec.gc.ca/ges-ghg>
 Chart by: Climate Change Connection, <http://climatechangeconnection.org>