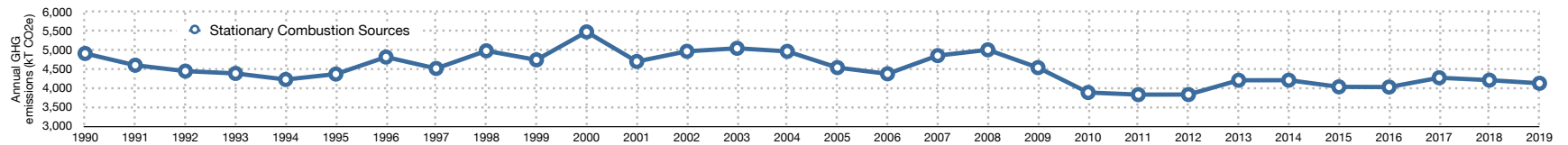


Manitoba GHG emissions

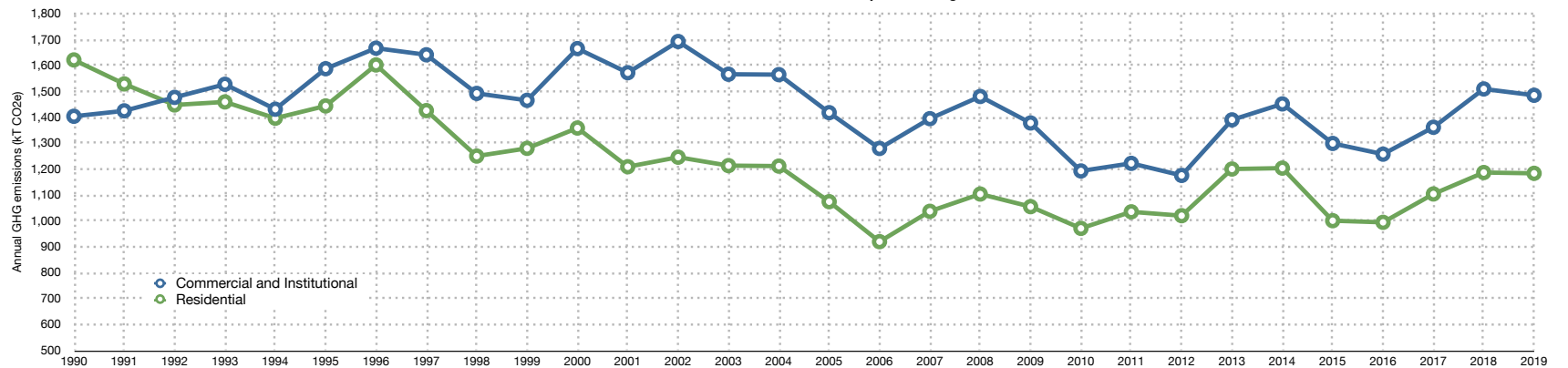
Stationary combustion sources

	1990	1991	1992	1993	1994	1995	1996	1997	1998	1999	2000	2001	2002	2003	2004	2005	2006	2007	2008	2009	2010	2011	2012	2013	2014	2015	2016	2017	2018	2019
Manitoba TOTAL	18,599	18,218	18,534	18,571	19,052	19,873	20,700	20,381	20,903	20,662	21,184	19,805	20,336	20,863	21,153	20,634	20,818	21,306	21,177	19,945	19,696	19,463	20,776	21,520	21,454	21,223	21,478	22,167	22,986	22,647
Stationary Combustion Sources	4,913	4,603	4,448	4,386	4,226	4,369	4,819	4,517	4,984	4,744	5,483	4,701	4,971	5,050	4,969	4,541	4,376	4,857	5,010	4,540	3,883	3,827	3,829	4,206	4,208	4,032	4,026	4,272	4,209	4,126
Public Electricity and Heat Production	519	386	389	300	312	199	304	273	1,012	605	1,072	551	460	814	613	358	420	495	444	201	90	122	112	120	127	124	69	69	41	40
Petroleum Refining Industries	-	-	-	-	-	-	-	-	-	-	-	-	-	-	-	-	-	-	-	-	-	-	-	-	-	-	-	-	-	-
Oil and Gas Extraction	1	1	1	1	1	1	1	0	1	1	0	0	0	0	1	0	2	0	0	0	0	0	0	0	0	0	0	0	0	0
Mining	79	80	62	28	8	13	11	12	20	19	22	44	26	88	104	96	283	310	302	253	162	91	95	107	91	78	59	97	120	118
Manufacturing Industries	1,183	1,090	968	931	959	1,014	1,092	1,021	1,052	1,212	1,240	1,186	1,364	1,205	1,336	1,466	1,337	1,467	1,525	1,468	1,286	1,211	1,281	1,222	1,190	1,395	1,498	1,488	1,178	1,129
Construction	63	46	51	38	41	34	32	45	85	76	62	61	69	79	83	86	92	103	99	76	106	113	108	123	111	104	122	113	125	121
Commercial and Institutional	1,404	1,425	1,477	1,527	1,431	1,588	1,667	1,642	1,492	1,465	1,665	1,572	1,693	1,566	1,565	1,418	1,279	1,395	1,480	1,378	1,192	1,222	1,175	1,390	1,452	1,299	1,257	1,361	1,509	1,485
Residential	1,622	1,529	1,448	1,459	1,396	1,444	1,602	1,426	1,250	1,280	1,358	1,209	1,246	1,213	1,211	1,074	919	1,037	1,103	1,054	971	1,035	1,020	1,200	1,203	1,000	994	1,104	1,186	1,183
Stationary Combustion vs 1990	0.0%	-6.3%	-9.5%	-10.7%	-14.0%	-11.1%	-1.9%	-8.1%	1.4%	-3.4%	11.6%	-4.3%	1.2%	2.8%	1.1%	-7.6%	-10.9%	-1.1%	2.0%	-7.6%	-21.0%	-22.1%	-22.1%	-14.4%	-14.4%	-17.9%	-18.0%	-13.0%	-14.3%	-16.0%
Residential vs 1990	0.0%	-5.7%	-10.7%	-10.0%	-13.9%	-11.0%	-1.2%	-12.1%	-22.9%	-21.1%	-16.2%	-25.5%	-23.2%	-25.2%	-25.3%	-33.8%	-43.3%	-36.1%	-32.0%	-35.0%	-40.1%	-36.2%	-37.1%	-26.0%	-25.8%	-38.3%	-38.7%	-31.9%	-26.8%	-27.0%
Commercial & Institutional vs 1990	0.0%	1.5%	5.2%	8.8%	1.9%	13.1%	18.8%	16.9%	6.3%	4.4%	18.6%	12.0%	20.6%	11.6%	11.5%	1.0%	-8.9%	-0.7%	5.5%	-1.8%	-15.1%	-13.0%	-16.3%	-1.0%	3.4%	-7.5%	-10.4%	-3.0%	7.5%	5.8%
Manufacturing Industries vs 1990	0.0%	-7.8%	-18.2%	-21.2%	-18.9%	-14.2%	-7.7%	-13.6%	-11.1%	2.5%	4.8%	0.3%	15.4%	1.9%	13.0%	24.0%	13.1%	24.0%	28.9%	24.1%	8.8%	2.4%	8.3%	3.4%	0.6%	18.0%	26.7%	25.8%	-0.4%	-4.5%

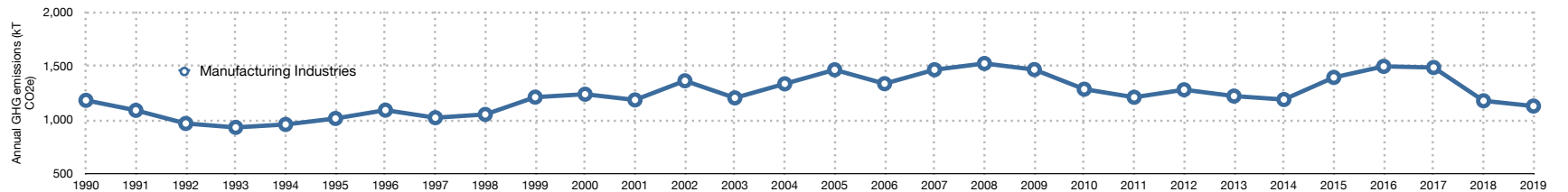
Manitoba GHG emissions from stationary combustion sources



Manitoba GHG emissions from space heating



Manitoba GHG emissions from manufacturing



Data source: Environment Canada, Canada's Greenhouse Gas Inventory, <http://www.ec.gc.ca/ges-ghg>
 Chart by: Climate Change Connection, <http://climatechangeconnection.org>