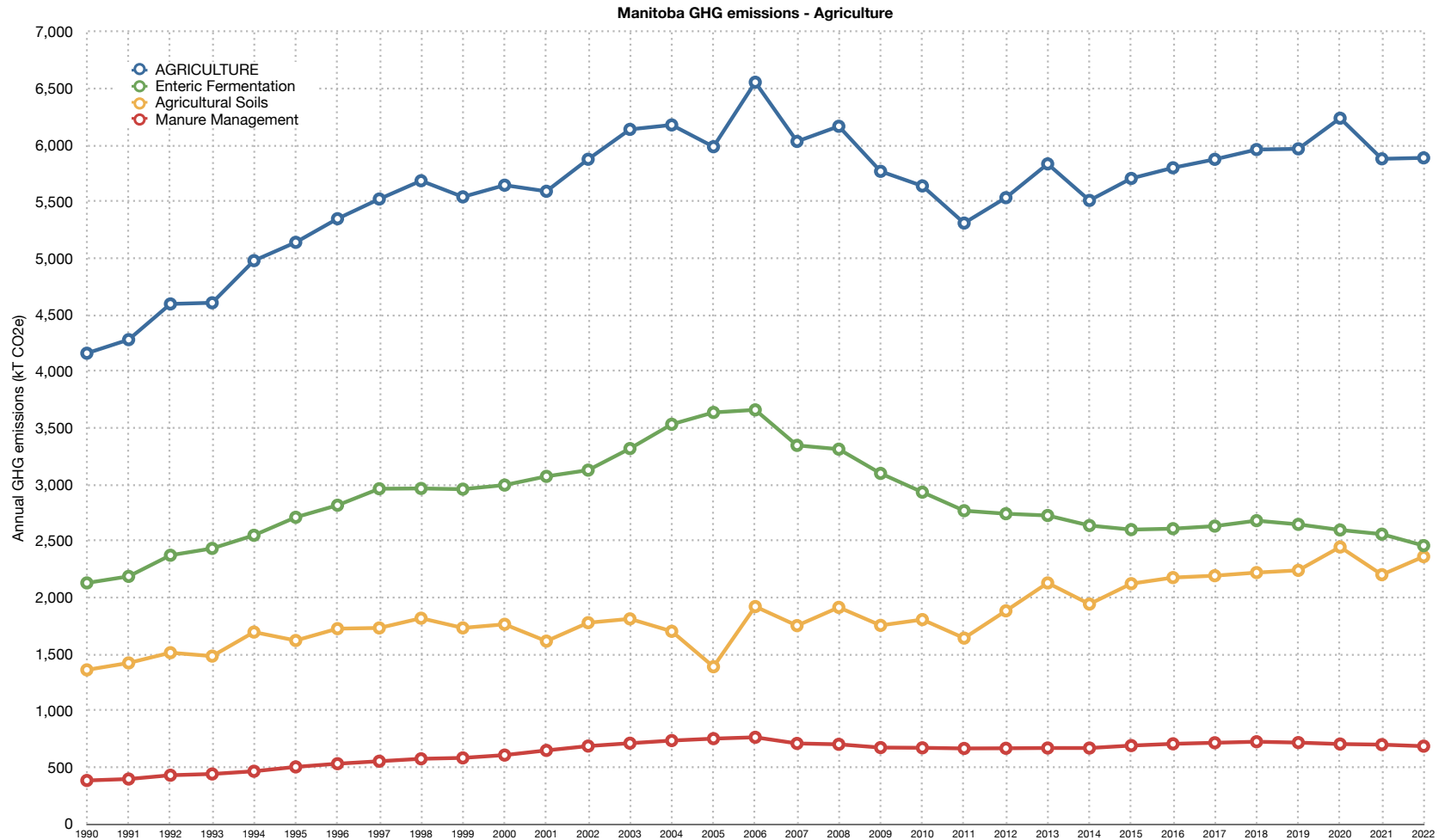


# Manitoba GHG emissions

# Agriculture

	1990	1991	1992	1993	1994	1995	1996	1997	1998	1999	2000	2001	2002	2003	2004	2005	2006	2007	2008	2009	2010	2011	2012	2013	2014	2015	2016	2017	2018	2019	2020	2021	2022
Manitoba TOTAL	18,230	17,907	18,244	18,321	18,805	19,542	20,251	20,114	20,627	20,442	20,904	19,679	20,425	20,713	20,948	20,624	21,043	21,295	21,242	19,663	19,260	19,258	20,659	21,197	21,135	20,843	21,141	21,599	22,410	22,131	21,088	20,608	21,609
AGRICULTURE	4,163	4,283	4,599	4,609	4,981	5,143	5,352	5,526	5,687	5,545	5,648	5,594	5,878	6,142	6,181	5,988	6,558	6,035	6,169	5,771	5,642	5,313	5,538	5,837	5,514	5,708	5,802	5,877	5,963	5,970	6,240	5,881	5,890
Enteric Fermentation	2,132	2,190	2,377	2,437	2,553	2,713	2,819	2,965	2,967	2,961	2,997	3,074	3,129	3,320	3,535	3,639	3,662	3,348	3,315	3,100	2,935	2,771	2,744	2,728	2,640	2,604	2,612	2,635	2,683	2,650	2,600	2,563	2,462
Manure Management	386	399	432	443	467	506	534	556	578	586	610	652	690	715	739	756	768	713	705	677	675	669	671	673	694	710	719	728	721	708	703	689	
Agricultural Soils	1,364	1,425	1,515	1,485	1,698	1,623	1,728	1,734	1,820	1,735	1,766	1,618	1,781	1,815	1,705	1,391	1,923	1,755	1,916	1,757	1,808	1,644	1,886	2,132	1,945	2,126	2,180	2,196	2,224	2,243	2,450	2,205	2,365
Agriculture - % of 1990	100%	103%	110%	111%	120%	124%	129%	133%	137%	133%	136%	134%	141%	148%	148%	144%	158%	145%	148%	139%	136%	128%	133%	140%	132%	137%	139%	141%	143%	143%	150%	141%	141%
Enteric Ferm. - % of 1990	100%	103%	111%	114%	120%	127%	132%	139%	139%	139%	141%	144%	147%	156%	166%	171%	172%	157%	155%	145%	138%	130%	129%	128%	124%	122%	122%	124%	126%	124%	122%	120%	115%
Manure Mgmt % of 1990	100%	103%	112%	115%	121%	131%	138%	144%	150%	152%	158%	169%	179%	185%	191%	196%	199%	185%	183%	175%	175%	173%	174%	174%	180%	184%	186%	189%	187%	183%	182%	179%	
Soils - % of 1990	100%	104%	111%	109%	124%	119%	127%	127%	133%	127%	130%	119%	131%	133%	125%	102%	141%	129%	141%	129%	133%	121%	138%	156%	143%	156%	160%	161%	163%	165%	180%	162%	173%



Data source: Environment Canada, Canada's Greenhouse Gas Inventory, <http://www.ec.gc.ca/ges-ghg>  
 Chart by: Climate Change Connection, <http://climatechangeconnection.org>