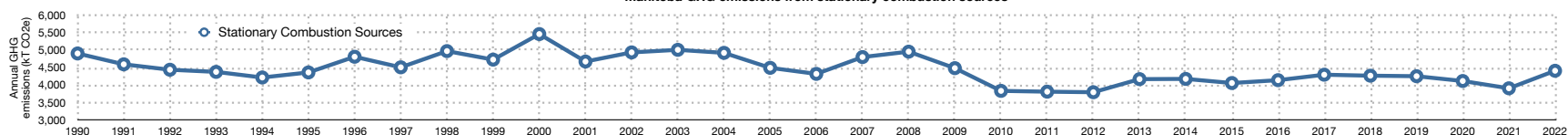


Manitoba GHG emissions

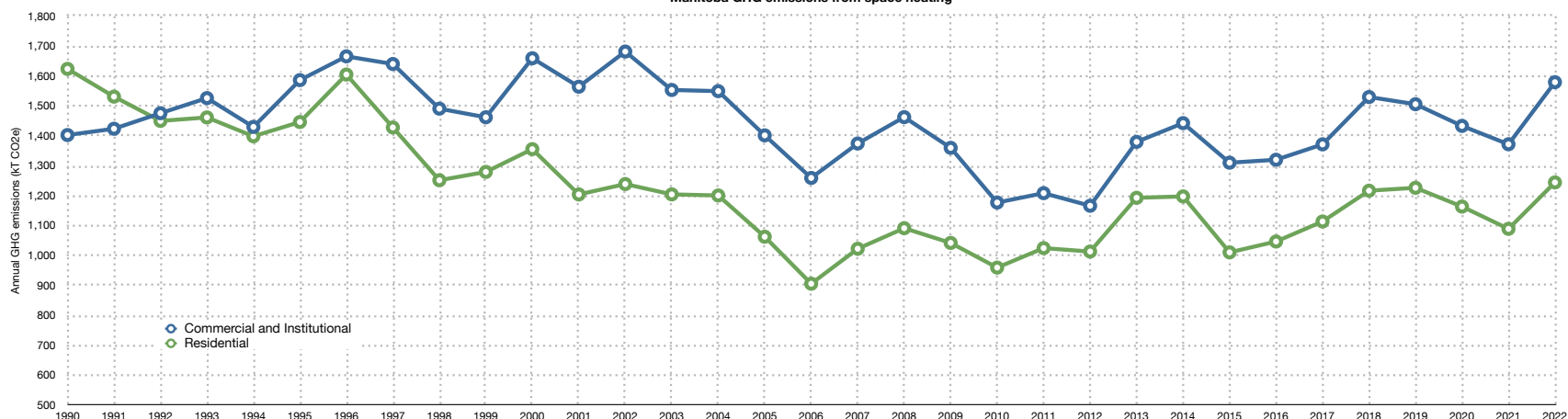
Stationary combustion sources

	1990	1991	1992	1993	1994	1995	1996	1997	1998	1999	2000	2001	2002	2003	2004	2005	2006	2007	2008	2009	2010	2011	2012	2013	2014	2015	2016	2017	2018	2019	2020	2021	2022		
Manitoba TOTAL	18,230	17,907	18,244	18,321	18,805	19,542	20,251	20,114	20,627	20,442	20,904	19,679	20,425	20,713	20,948	20,624	21,043	21,295	21,242	19,663	19,260	19,258	20,659	21,197	21,135	20,843	21,141	21,599	22,410	22,131	21,088	20,608	21,609		
Stationary Combustion Sources	4,913	4,603	4,448	4,387	4,226	4,371	4,820	4,517	4,982	4,737	5,469	4,683	4,944	5,018	4,931	4,503	4,329	4,810	4,965	4,493	3,843	3,820	3,804	4,179	4,186	4,068	4,149	4,306	4,278	4,263	4,126	3,917	4,419		
Public Electricity and Heat Production	519	385	389	299	311	198	304	272	1,010	604	1,070	550	458	812	611	361	425	501	446	202	92	122	112	120	126	124	69	69	41	40	41	56	48		
Petroleum Refining Industries	-	-	-	-	-	-	-	-	-	-	-	-	-	-	-	-	-	-	-	-	-	-	-	-	-	-	-	-	-	-	-	-	-	-	-
Oil and Gas Extraction	1	1	1	1	1	1	1	0	1	1	0	0	0	0	1	0	2	0	0	0	0	0	0	0	0	0	0	0	0	0	0	0	0	0	
Mining	78	80	62	28	8	13	11	12	20	19	22	44	26	88	104	96	283	309	301	253	162	90	95	107	91	78	59	97	120	119	119	118	107		
Manufacturing Industries	1,182	1,089	967	931	958	1,015	1,091	1,021	1,051	1,210	1,236	1,182	1,357	1,197	1,326	1,453	1,320	1,449	1,509	1,452	1,272	1,229	1,272	1,214	1,184	1,408	1,505	1,499	1,195	1,199	1,203	1,119	1,275		
Construction	63	46	51	38	41	34	32	45	84	76	62	61	68	79	83	85	90	101	98	75	105	112	108	122	110	105	122	114	126	123	114	112	120		
Commercial and Institutional	1,403	1,424	1,476	1,527	1,430	1,587	1,666	1,640	1,491	1,462	1,660	1,565	1,682	1,554	1,550	1,402	1,260	1,375	1,463	1,360	1,178	1,209	1,167	1,380	1,443	1,311	1,320	1,372	1,530	1,506	1,434	1,372	1,580		
Residential	1,624	1,531	1,450	1,462	1,399	1,447	1,605	1,428	1,252	1,280	1,356	1,205	1,239	1,205	1,201	1,063	906	1,023	1,092	1,043	960	1,025	1,014	1,193	1,198	1,011	1,047	1,114	1,217	1,227	1,164	1,090	1,245		
Stationary Combustion vs 1990	0.0%	-6.3%	-9.5%	-10.7%	-14.0%	-11.0%	-1.9%	-8.1%	1.4%	-3.6%	11.3%	-4.7%	0.6%	2.1%	0.4%	-8.4%	-11.9%	-2.1%	1.1%	-8.5%	-21.8%	-22.2%	-22.6%	-14.9%	-14.8%	-17.2%	-15.5%	-12.4%	-12.9%	-13.2%	-16.0%	-20.3%	-10.1%		
Residential vs 1990	0.0%	-5.7%	-10.7%	-10.0%	-13.9%	-10.9%	-1.2%	-12.1%	-22.9%	-21.2%	-16.5%	-25.8%	-23.7%	-25.8%	-26.0%	-34.5%	-44.2%	-37.0%	-32.8%	-35.8%	-40.9%	-36.9%	-37.6%	-26.5%	-26.2%	-37.8%	-35.5%	-31.4%	-25.1%	-24.5%	-28.3%	-32.9%	-23.4%		
Commercial & Institutional vs 1990	0.0%	1.5%	5.2%	8.8%	1.9%	13.1%	18.7%	16.9%	6.3%	4.2%	18.3%	11.5%	19.9%	10.7%	10.5%	-0.1%	-10.2%	-2.0%	4.3%	-3.1%	-16.1%	-13.8%	-16.8%	-1.6%	2.8%	-6.6%	-5.9%	-2.2%	9.1%	7.3%	2.2%	-2.2%	12.6%		
Manufacturing Industries vs 1990	0.0%	-7.8%	-18.2%	-21.2%	-18.9%	-14.1%	-7.7%	-13.6%	-11.1%	2.4%	4.6%	-0.0%	14.8%	1.3%	12.2%	22.9%	11.7%	22.6%	27.7%	22.9%	7.6%	4.0%	7.6%	2.7%	0.1%	19.1%	27.3%	26.9%	1.1%	1.4%	1.8%	-5.3%	7.9%		

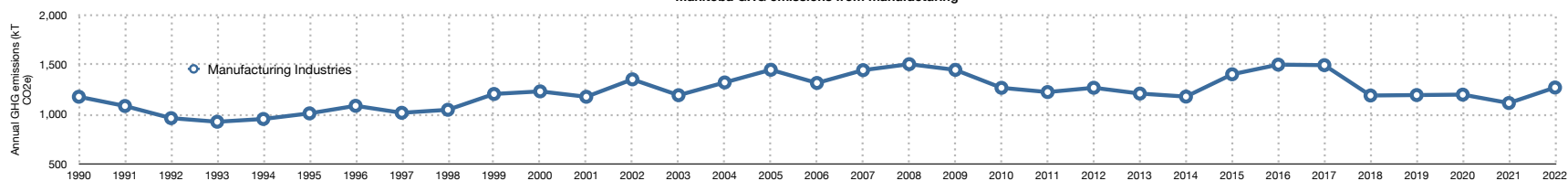
Manitoba GHG emissions from stationary combustion sources



Manitoba GHG emissions from space heating



Manitoba GHG emissions from manufacturing



Data source: Environment Canada, Canada's Greenhouse Gas Inventory, <http://www.ec.gc.ca/ges-ghg>
 Chart by: Climate Change Connection, <http://climatechangeconnection.org>